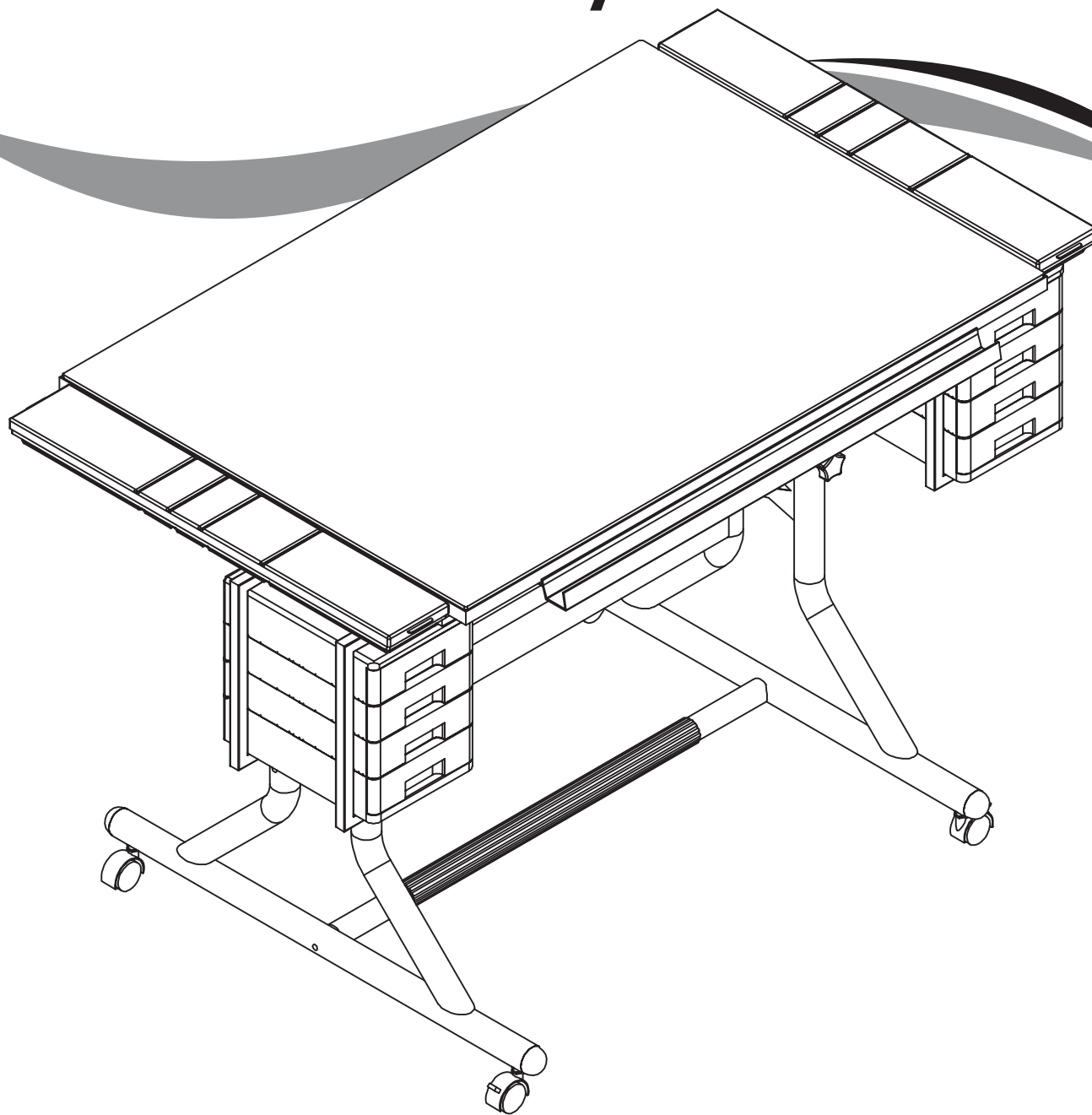




CraftMaster II™ Glass Top Deluxe Art and Drawing Table Assembly Instructions



CM48GL



CraftMaster II™ Glass Top Deluxe Art and Drawing Table

Assembly Instructions

For CM48GL

Tools required:

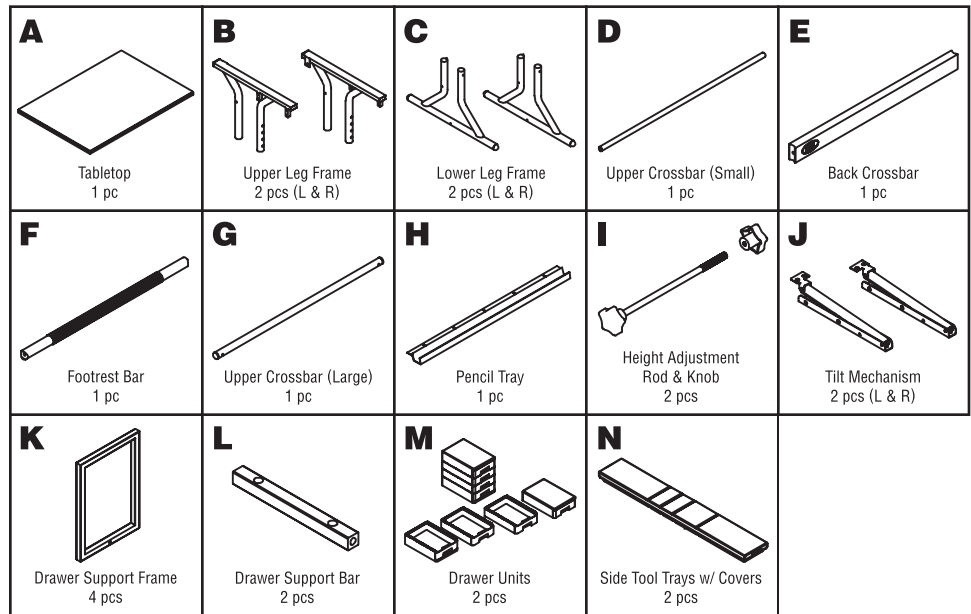
Phillips screwdriver.

Important notes:

1. Power tools for assembly are not recommended. Great care must be taken to avoid over-tightening screws so that holes are not stripped accidentally.
2. Glass can be easily scratched or broken if not handled carefully. Please use care when unpacking and assembling to prevent damage.

Parts:

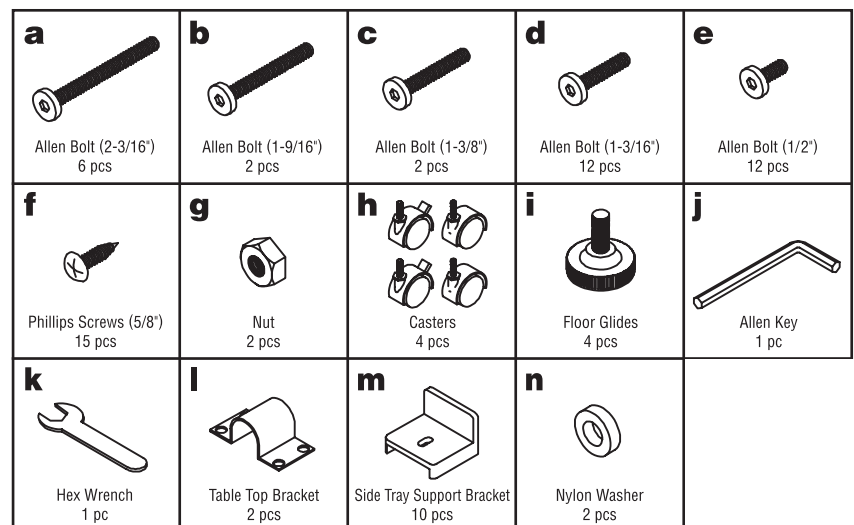
- A** 1pc Tabletop (Glass)
- B** 2pc Upper Leg Frame (L & R)
- C** 2pc Lower Leg Frame (L & R)
- D** 1pc Upper Crossbar (Small)
- E** 1pc Back Crossbar
- F** 1pc Footrest Bar
- G** 1pc Upper Crossbar (Large)
- H** 1pc Pencil Tray
- I** 2pcs Height Adjustment Rod & Knob
- J** 2pc Tilt Mechanism (L & R)
- K** 4pc Drawer Support Frame
- L** 2pc Drawer Support Bar
- M** 2pcs Drawer Units
- N** 2pcs Side Tool Trays with Covers



Hardware:

NOTE: For your convenience, we have included extra screws, bolts, and washers.

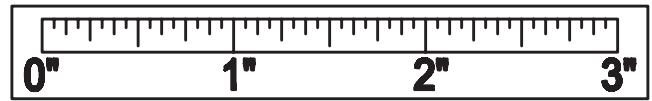
- a** 6pcs Allen Bolt (2-3/16")
- b** 2pcs Allen Bolt (1-9/16")
- c** 2pcs Allen Bolt (1-3/8")
- d** 12pcs Allen Bolt (1-3/16")
- e** 12pcs Allen Bolt (1/2")
- f** 15pcs Phillips Screws (5/8")
- g** 2pcs Nut
- h** 4pcs Casters
- i** 4pcs Floor Glides
- j** 1pc Allen Key
- k** 1pc Hex Wrench
- l** 2pcs Table Top Bracket
- m** 10pcs Side Tray Support Bracket
- n** 2pcs Nylon Washer



Thank you for purchasing this Alvin® table

Need assistance with assembly? Call customer service at 1-800-444-2584. Visit us on-line at www.alvinco.com.

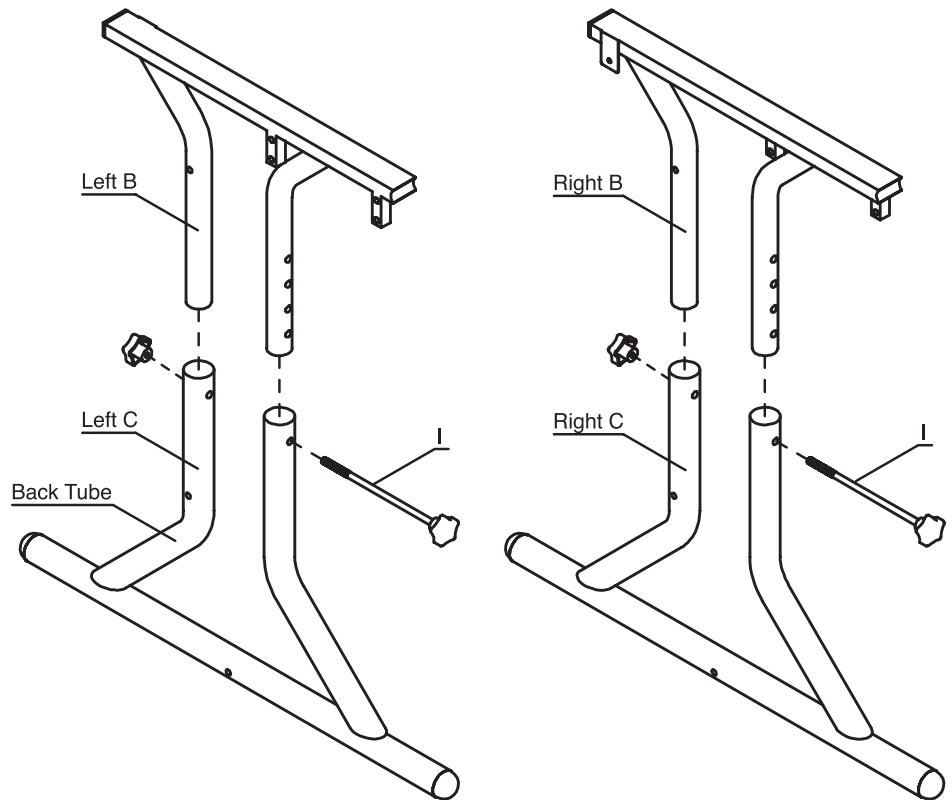
CM48GL Assembly Instructions



Step 1

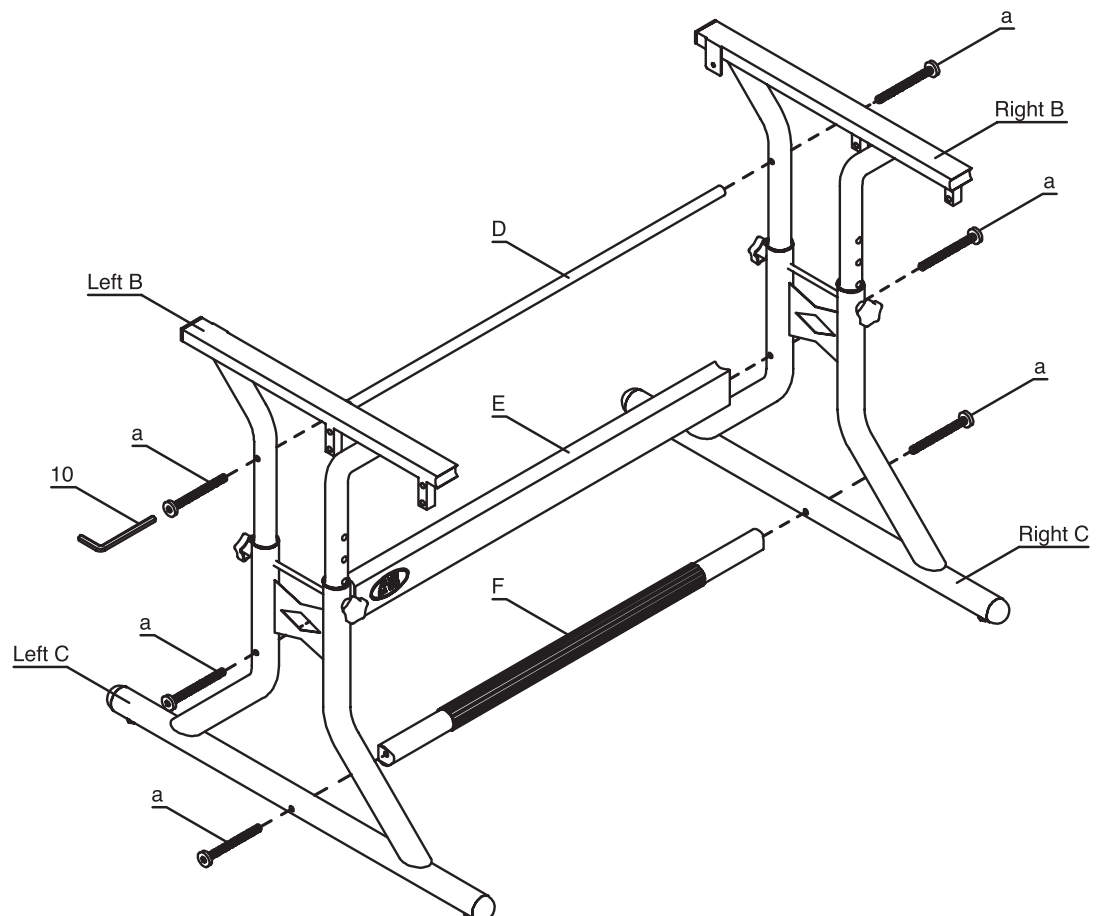
- 1** Unwrap all parts and lay them out to be certain you have them all. For your convenience, we have included extra screws, bolts and washers.
- 2** Insert upper leg frame (**B**) into lower leg frame (**C**). Note that the back tube extension of the lower leg frame is longer than the front extension.
- 3** Align holes in upper and lower frames at designed height, insert height adjustment rod (**I**), and secure with adjustment knob. Repeat for left and right frames.

IMPORTANT It is best to set the proper height at this time. See height adjustment guidelines on Page 7 for reference.

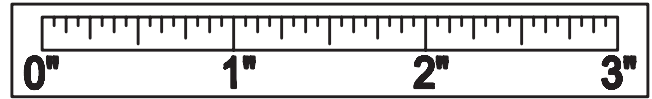


Step 2

- 1** Attach back crossbar (**E**) to the left leg frame using 2-3/16" bolt (**a**).
- 2** Attach footrest bar (**F**) to left leg frame using 2-3/16" bolt (**a**).
- 3** Attach upper cross tube (small) (**D**) to left leg frame using 2-3/16" bolt (**a**).
- 4** Repeat steps above to attach all 3 cross pieces to right leg frame. Be certain that all 6 bolts are tightened securely to ensure stability of table.

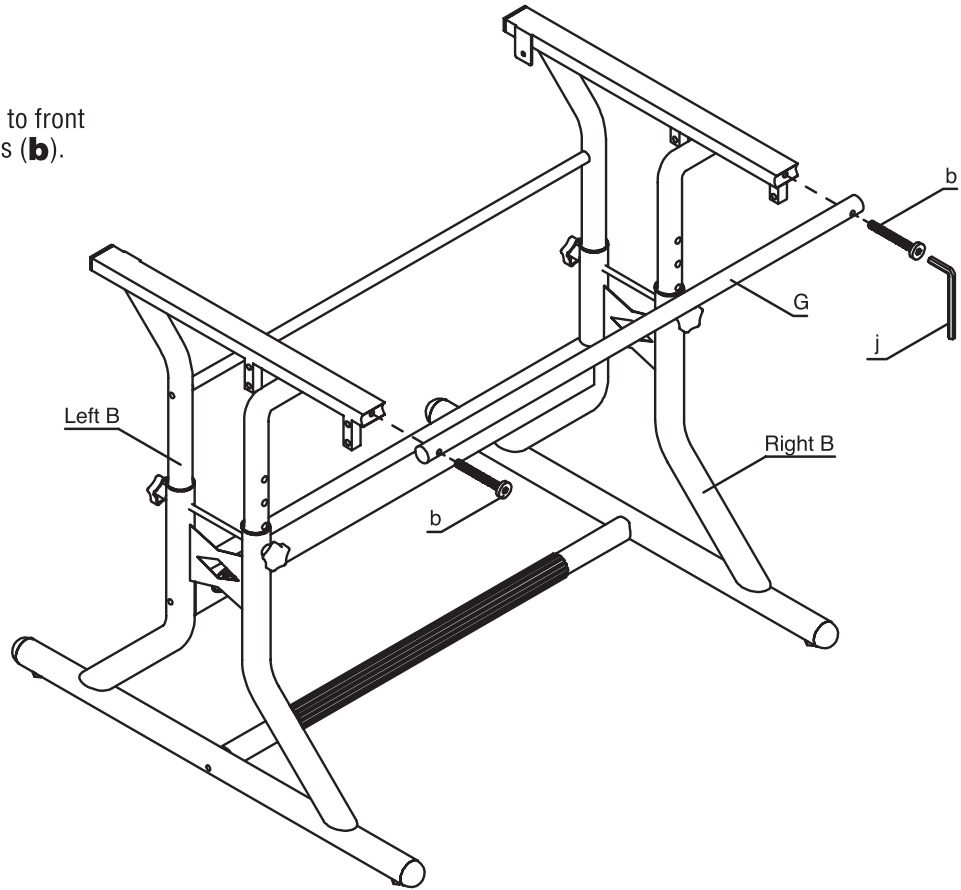


CM48GL Assembly Instructions



Step 3

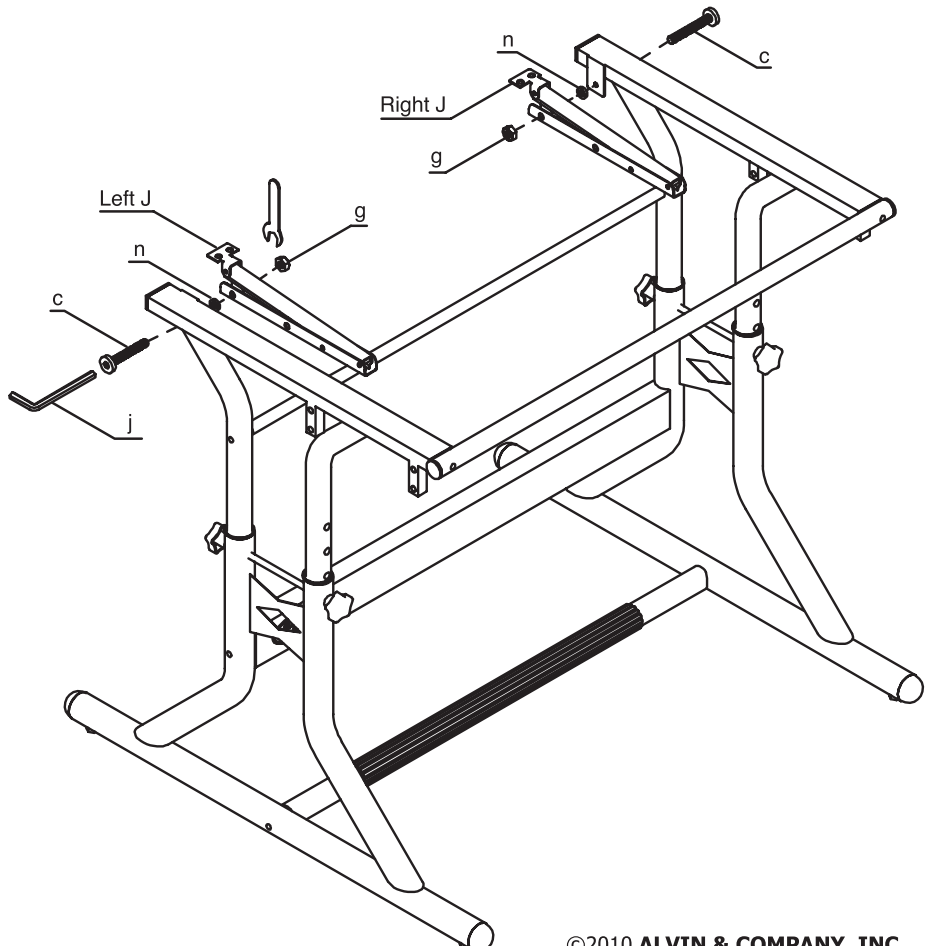
- 1 Attach the upper crossbar (large) (**G**) to front of upper leg frames using 1-9/16" bolts (**b**).



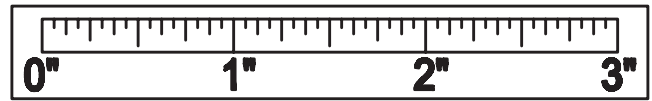
Step 4

- 1 Attach tilt mechanisms (**J**) to back of upper leg frames using 1-3/8" bolts (**c**), nylon washers (**n**) and nuts (**g**). Be sure that nylon washer (**n**) is positioned between tilt mechanism and leg frame.

HINT Nut (**g**) has a built-in locking ring to keep it secure. You may prefer using a standard wrench or pliers to force the bolt through the unit.



CM48GL Assembly Instructions



Step 5

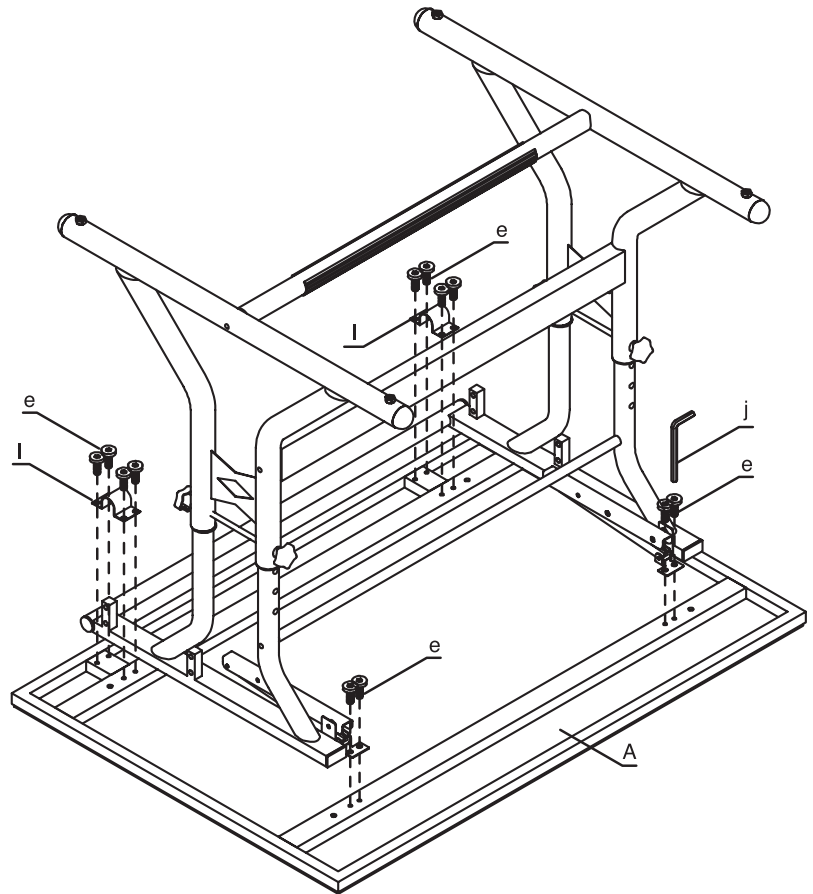
1 Place table top (**A**) on a carpeted or otherwise protected floor, to avoid scratches, with the pre-drilled holes facing up.

2 Turn the base frame upside down aligning the holes on the tilt mechanism and the base frame to the four pairs of holes on the frame of the table top.

IMPORTANT This step requires the assistance of at least one other person.

3 Attach the tilt mechanism to the table frame with 1/2" allen bolts (**e**).

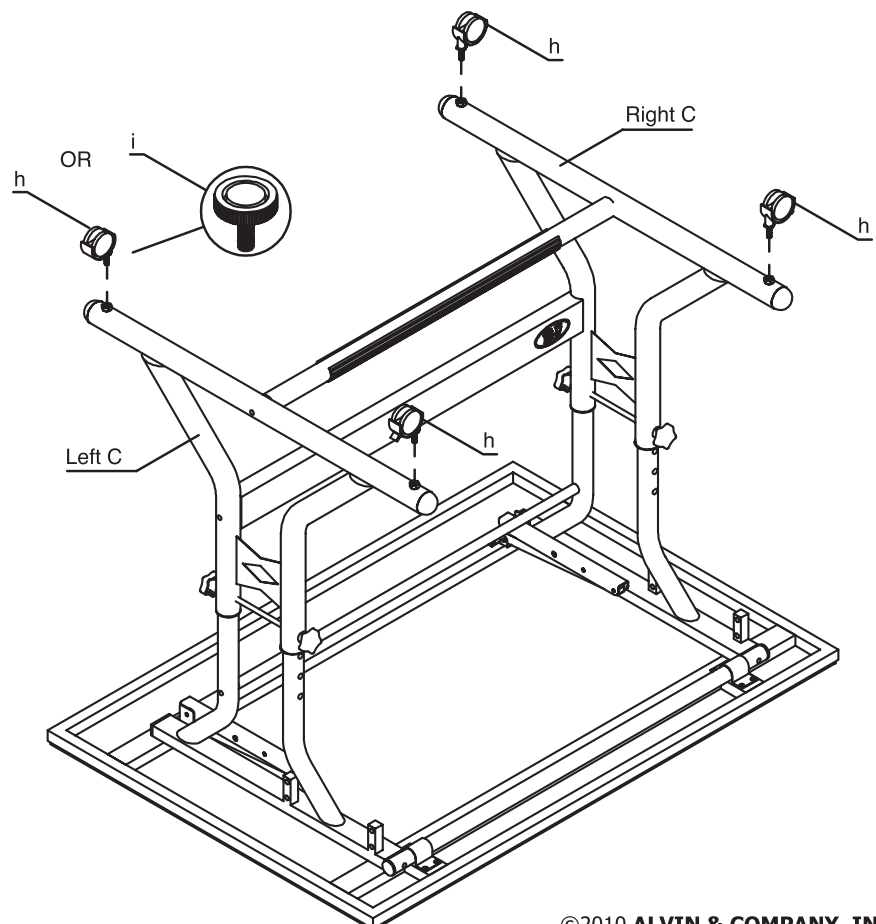
4 Attach the base frame to the table frame with table top bracket (**l**) and 1/2" allen bolt (**e**). The table top bracket (**l**) will secure over the upper crossbar (**G**).



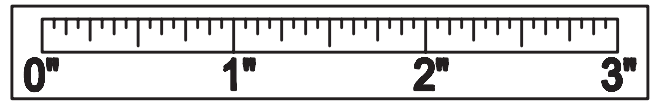
Step 6

1 Choose either casters (**H**) or floor glides (**i**) and screw into holes in bottom of lower leg tubes.

NOTE Table includes 2 locking casters and 2 non-locking casters. Most users prefer the locking casters in front for ease of access.

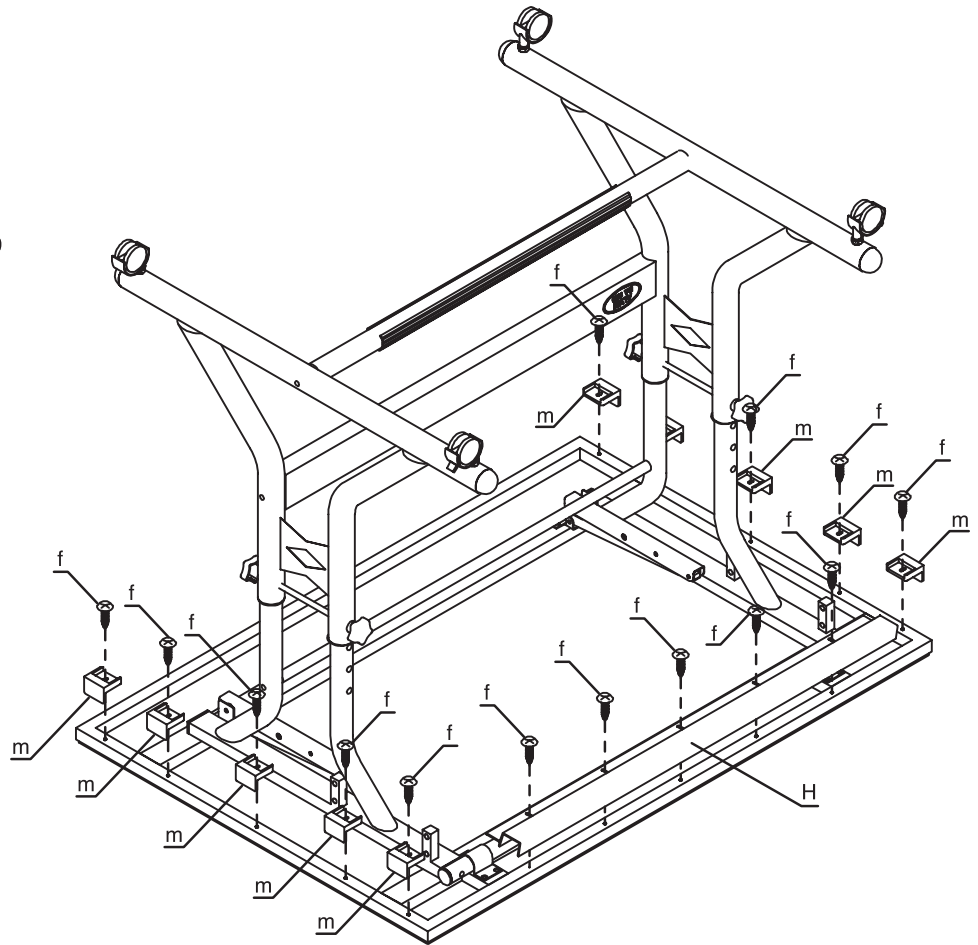


CM48GL Assembly Instructions



Step 7

- 1 Attach plastic pencil tray (**H**) using 5/8" Phillips screws (**f**) into pre-drilled holes in front of tabletop.
- 2 Attach side tray support brackets (**m**) to underside of tabletop using 5/8" Phillips screws (**f**) into predrilled holes. Be careful not to over tighten or you may strip the holes.



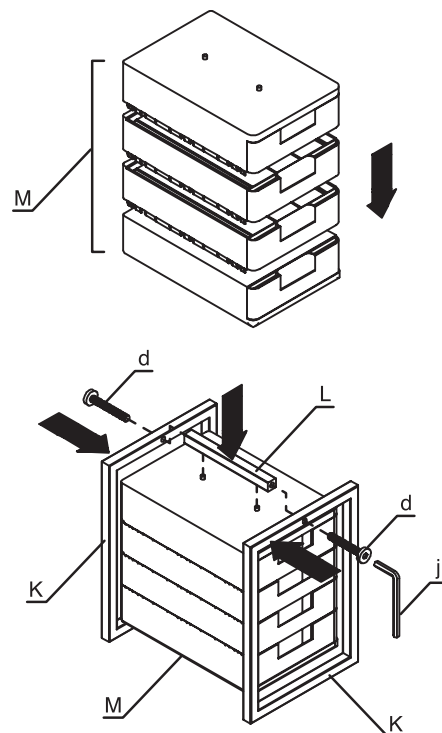
Step 8

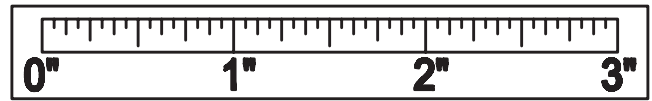
- 1 Snap together the two drawer units (**M**). This is best done with the drawers removed. Note that sets consist of distinctive top, middle and bottom pieces. (Middle pieces have open top and open bottom. Bottom piece has open top and two bump-out holes in bottom, with 4 round feet. Top piece has solid smooth top and open bottom.)

TIP When snapping together, partially insert the tab at the back edge of a drawer into the slot of the next drawer, aligning corners, and slowly work your way forward, aligning the side tabs and slots before applying pressure and snapping firmly together.

NOTE Illustration show the drawers upside down with the two bump-outs pointing up.

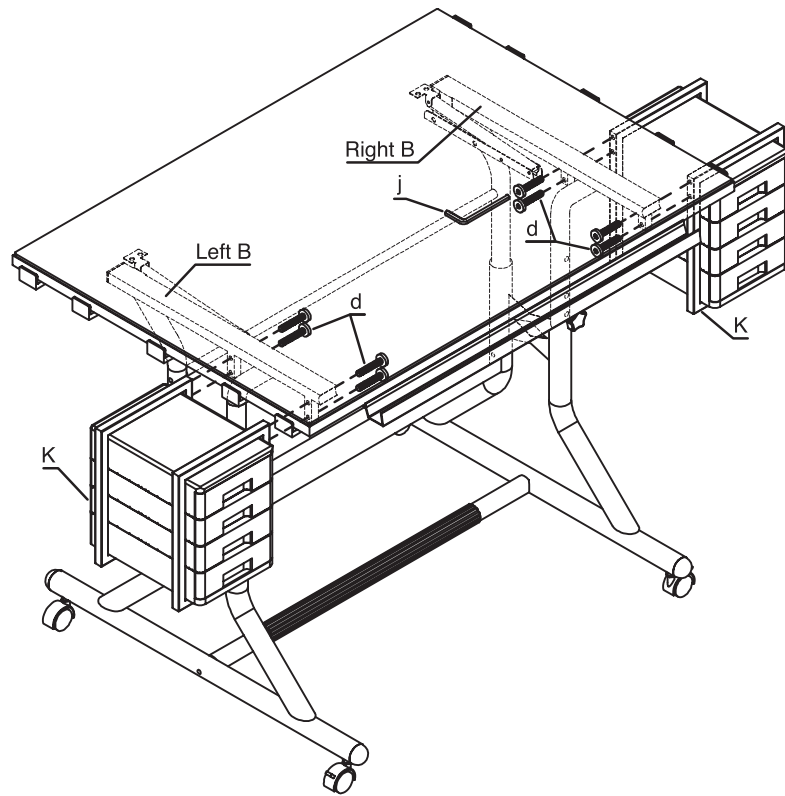
- 2 When completed, place the drawer support bar over the bottom of the drawers. The two holes on the drawer support bar should fit onto the two bump-outs on the bottom of the drawers. Slide the drawer support frame (**K**) over the drawers. Secure the frames (**K**) to the support bar (**L**) with the 1-3/16" allen bolts (**d**).





Step 9

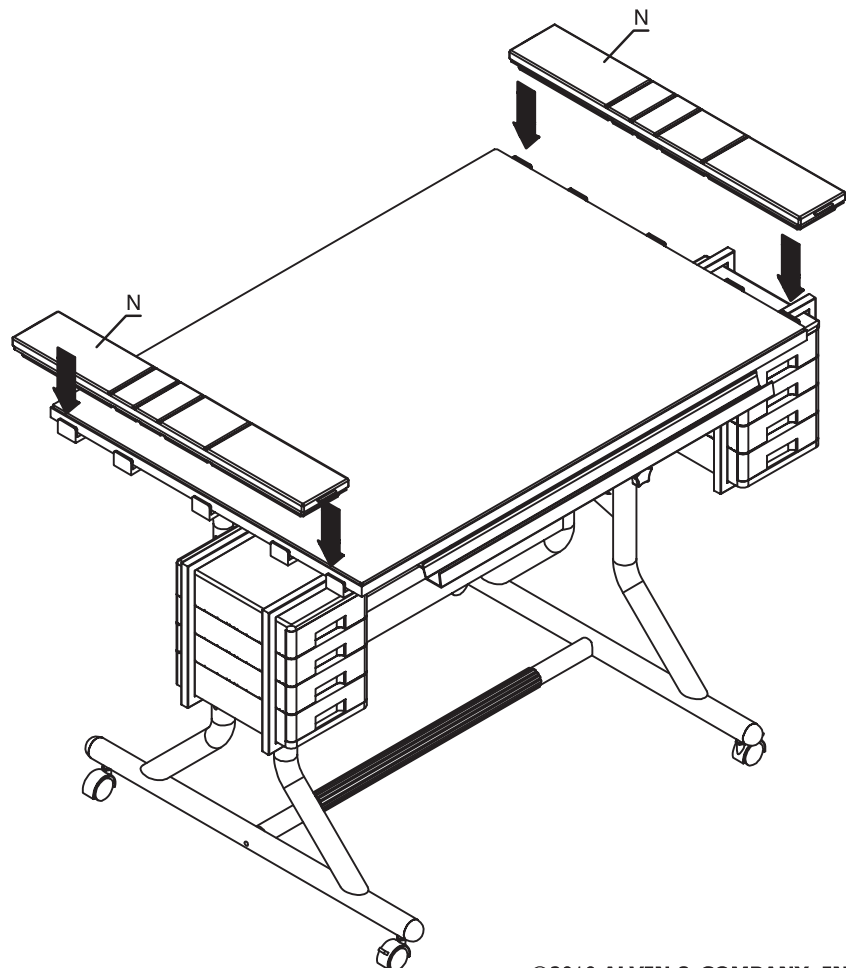
- 1** Carefully return assembled table to its upright position (this is strongly recommended to be done by two people).
- 2** Attach the drawer unit to the base frame with 1-3/16" allen bolts (**d**).



Step 10

- 1** Attach side tool trays (**N**) to side tray support brackets. For best visibility this may be easiest to do with the table tilted at about 45°. Also you may need to loosen the screws and reposition the support bracket slightly to get best flush fit against side of tabletop.
- 2** Table is now ready for use. Please save these instructions for future reference. See page 8 for tips and suggestions for ease of use.

WARNING Do not exceed the recommended weight limit on glass surface. Do not use glass top as a cutting surface. Misuse can cause serious personal injury or death.



USAGE AND CARE INSTRUCTIONS

Cleaning

Use regular window cleaner to clean glass. Wipe the rest of table with clean damp cloth if necessary. Do not use abrasive cleaners.

To Adjust Tilt

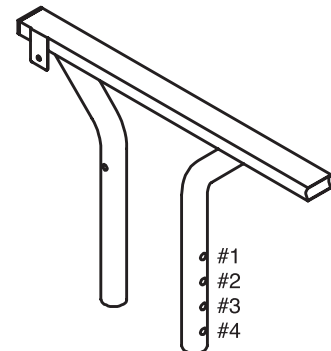
The ratcheted tilt mechanisms allow you to set the table top at a variety of comfortable working angles. Simply lift the table top from the back edge until it clicks into the desired position. To return the top to the flat position, raise the back edge as high as it will go. This will release the ratchet mechanism.

To Adjust Height

It is suggested that the table height be set during initial assembly, prior to attaching drawer units. To adjust the height at a later time, follow these steps:

1. Please do not attempt to adjust the height with the table in the upright position.
2. It is suggested that two people perform the height adjustment to avoid damaging table.
3. Return table top to flat, horizontal position.
4. Remove drawers to avoid spilling contents. (It is ok for drawer unit frames to remain in place.)
5. Carefully lay table on its back. Be sure it is resting on a carpeted or otherwise protected surface.
6. Unscrew height adjustment knob (K) from both left and right side frames and slide out adjustment rods. Align adjustment holes to desired setting and reinsert rods. Screw adjustment knobs onto ends of rods and return table to upright position.

ADJUSTMENT HOLE #	HEIGHT USING CASTERS	HEIGHT USING FLOOR GLIDERS
#1	27-3/4"	25-3/4"
#2	29-1/4"	27-1/4"
#3	30-3/4"	28-3/4"
#4	32-1/4"	30-1/4"
*Height is measured from floor to table top in flat position.		



FREE GOODS

We Welcome Your Comments and Suggestions

Alvin Drafting Dots (#DM123) work wonderfully to tape your paper and other media to the tilted table surface. To receive a free box of Drafting Dots, simply visit "Contact Us" page on our website www.alvinco.com and submit your comments and suggestions about our CraftMaster table. We are constantly working on product improvements and look forward to hearing from you.



Please recycle as much of the packaging materials as possible. Thank you.